



 BlueVillas
The Luxury Concept

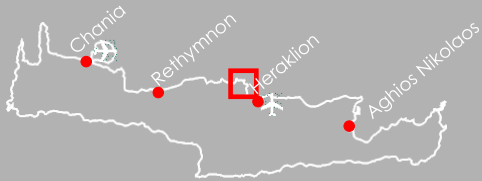
VILLA PEACH

Rogdia, Heraklion, Crete

VILLA PEACH

PRIVATE SEAWATER POOL
PROXIMITY TO THE BEACH
PRIVATE GYM & HAMMAM

Location: Rogdia, Heraklion, Crete



Accommodation:

Guests : 12
Bedrooms : 6
Bathrooms : 7
Guest WC : 1

Distances:

To closest shop : 2.2 km (1.3 miles)
To Heraklion Airport : 19.6 km (12.1 miles)
To Heraklion Port : 16.3 km (10.1 miles)
To Paleokastro beach : 1.6 km (1.0 miles)
To Rodia village : 5.3 km (3.3 miles)
To Heraklion Town : 16.7 km (10.3 miles)

A Signature Portfolio Villa

Nestled on a hillside location on the north coast of Crete, Peach is a newly constructed luxury villa that can accommodate 12 deluxe guests. Ample and comfy rooms, cutting-edge amenities, a large terrace with a private pool, and panoramic sea views make this villa the perfect summer retreat for a group of friends or family. Plus, Peach is close to many beautiful beaches, ideal for both adults and children, while the Heraklion Town is just a 20-minute drive away where shops, pharmacies, and restaurants are at hand's reach.

Outdoors

Peach is a fine example of geometric design built out of natural materials, creating an ambiance of luxuriousness and classiness. We already know which one will steal your heart away, the large terrace with the seawater infinity pool adorned with white pebbles. Dive into your private pool to cool down after a long day of holiday bliss or relax in the shaded lounge area enjoying the unlimited sea views. In the evening, gather with your friends and family at the alfresco dining area to savor a BBQ meal that your private chef made just for you. As for the kids, they will love the green grass playground that is nearby, promising endless moments of fun!

Indoors

Peach's interiors can be described by just one word, simply impressive! Spreading over 3 levels, connected by an elevator, features high-comfort amenities and guarantees privacy even among the guests. Every room features large glass doors letting the natural light in, offering mesmerizing sea views or direct access to the outdoors. You'll find it hard to choose among the 6 bedrooms, each one designed to the slightest detail to pamper the guests, while the bedrooms on the upper level have direct access to a private balcony with a seating area and a playground. And now for the cherry on top! On the lower level, there is a hammam room and a gym room to let off some steam. Dear luxury, nice to meet you!

Remember to

Peach is part of our exclusive Signature Portfolio, a collection of carefully chosen properties that offer a unique luxury lifestyle experience and amenities that rival those of a 5* hotel. The villa grants easy access to a variety of organized and sandy beaches with shallow and crystal-clear waters and to many seaside tavernas where you can try traditional Cretan dishes. Peach is ideal for winter vacation too, as your private pool can be heated, and the lively Heraklion Town is just 20 minutes away, where shops, cafes, and restaurants are open all year round.



THE HOUSE

Living area: 380 sqm / 4,090 sqft

Plot size: 1,050 sqm / 11,302 sqft

Ground Level

1 bedroom with double bed (can split into 2 single beds), A/C, en-suite bathroom with shower, TV, walk-in closet, safe box, hairdryer, desk, access to the alfresco seating area

Living room with sofa, A/C, ceiling fan, TV, fireplace, sound system, sea view, access to pool

Dining area for up to 12 guests, sea view, access to pool

Fully equipped kitchen, TV, access to outdoor seating area

Guest WC

Upper Level

1 master bedroom with double bed, A/C, en-suite bathroom with bathtub and shower, TV, wardrobe, safe box, hairdryer, desk, access to private balcony with seating area, sea view

1 master bedroom with double bed, A/C, en-suite bathroom with bathtub, TV, wardrobe, safe box, hairdryer, desk, access to private balcony with seating area, sea view

1 bedroom with double bed (can split into 2 single beds), A/C, en-suite bathroom with shower, TV, wardrobe, safe box, hairdryer, desk, access to private veranda with seating area and playground, garden view

Lower Level

2 bedrooms each with double bed (can split into 2 single beds), A/C, en-suite bathroom with shower, wardrobe, safe box, hairdryer, sea view

Kitchenette

Gym with treadmill, multi-gym home equipment, wall rope, dumbbells, TV

Hammam

Bathroom with shower

Laundry room

Outdoors

Private seawater infinity swimming pool (50 sqm / 538 sqft) with jacuzzi jets (heated upon request with extra charge)

Sun loungers

Outdoor lounge and dining area for up to 12 guests

Outdoor seating areas

Outdoor shower

Garden with grass

Playground

Private parking area for up to 4 cars



































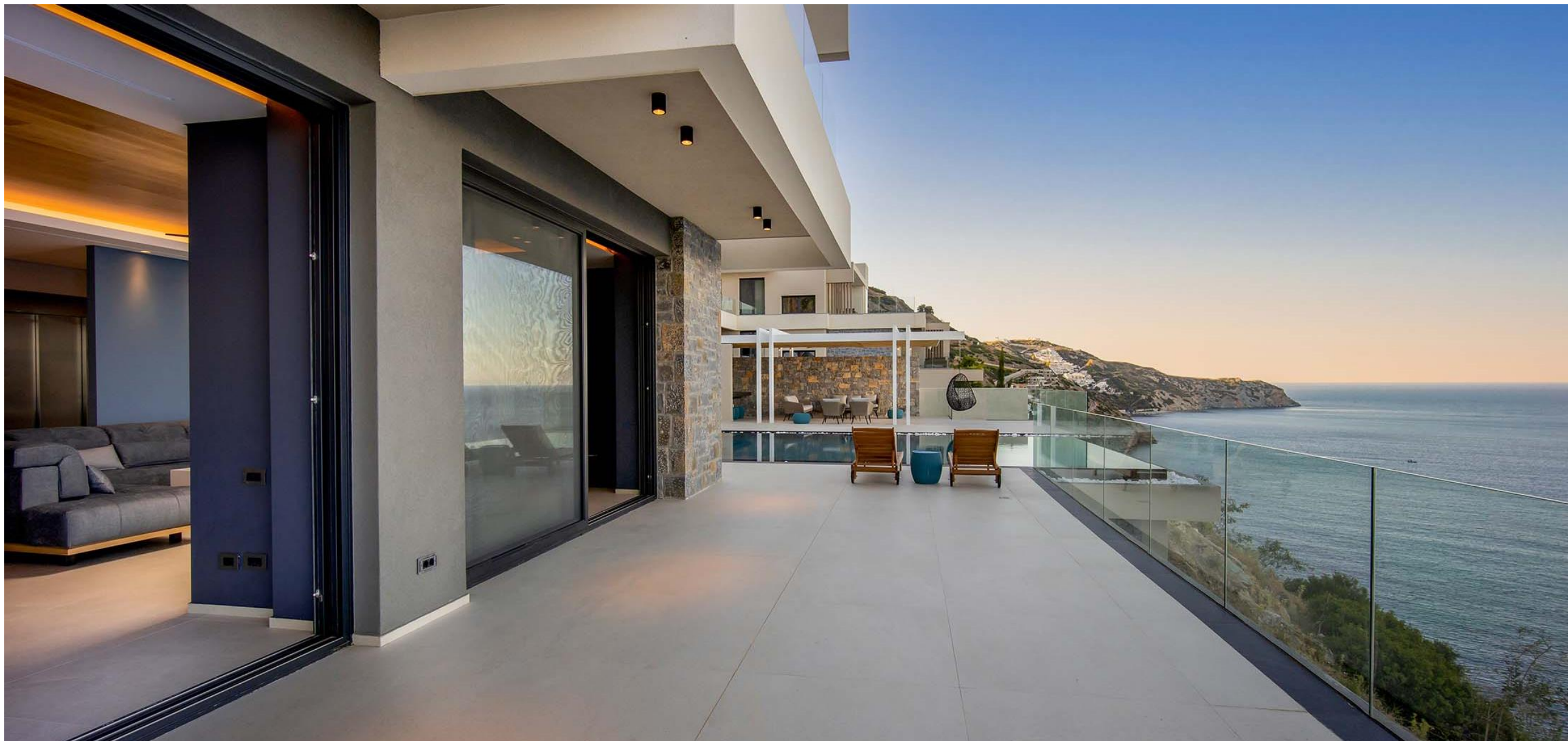




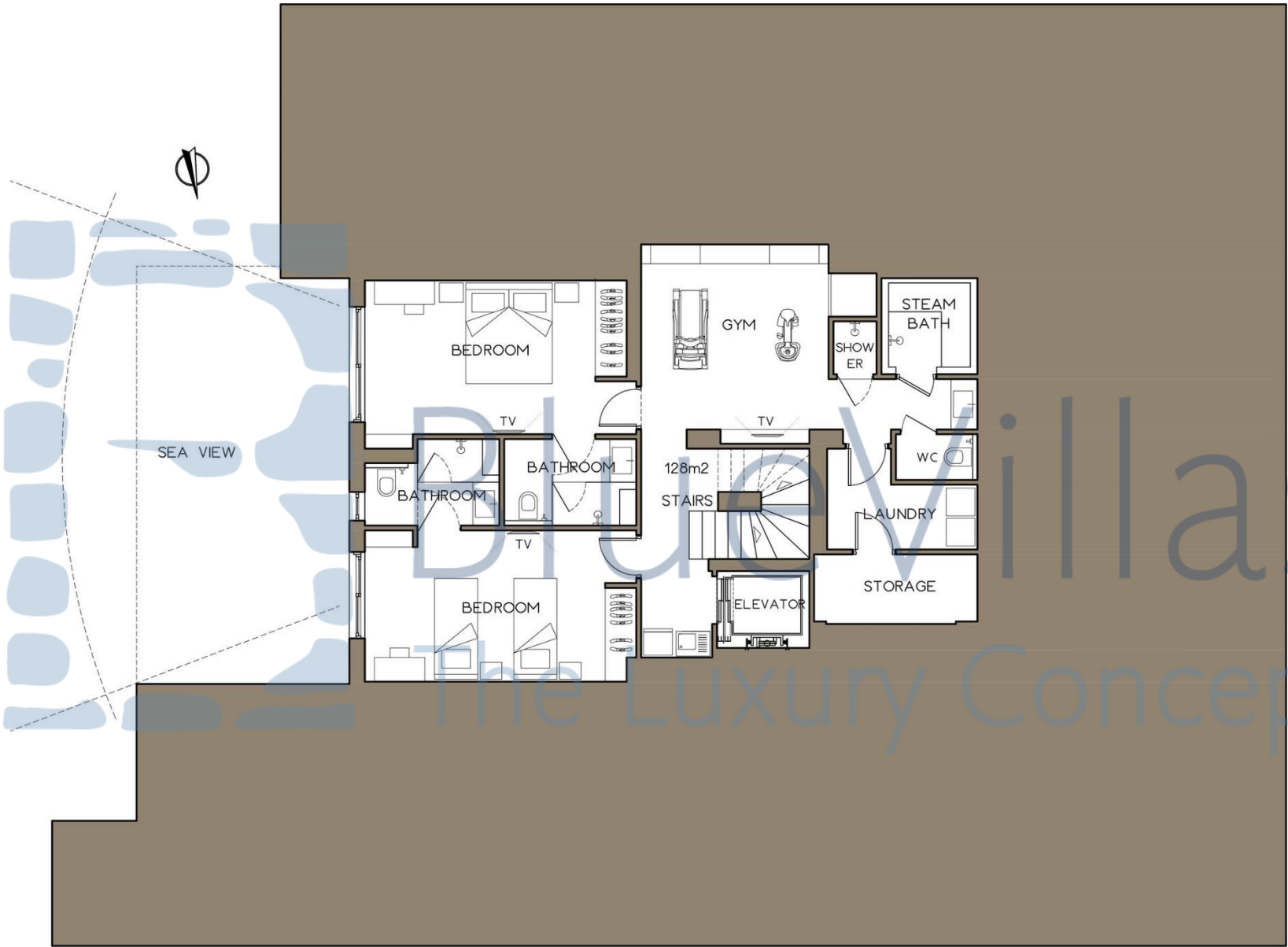




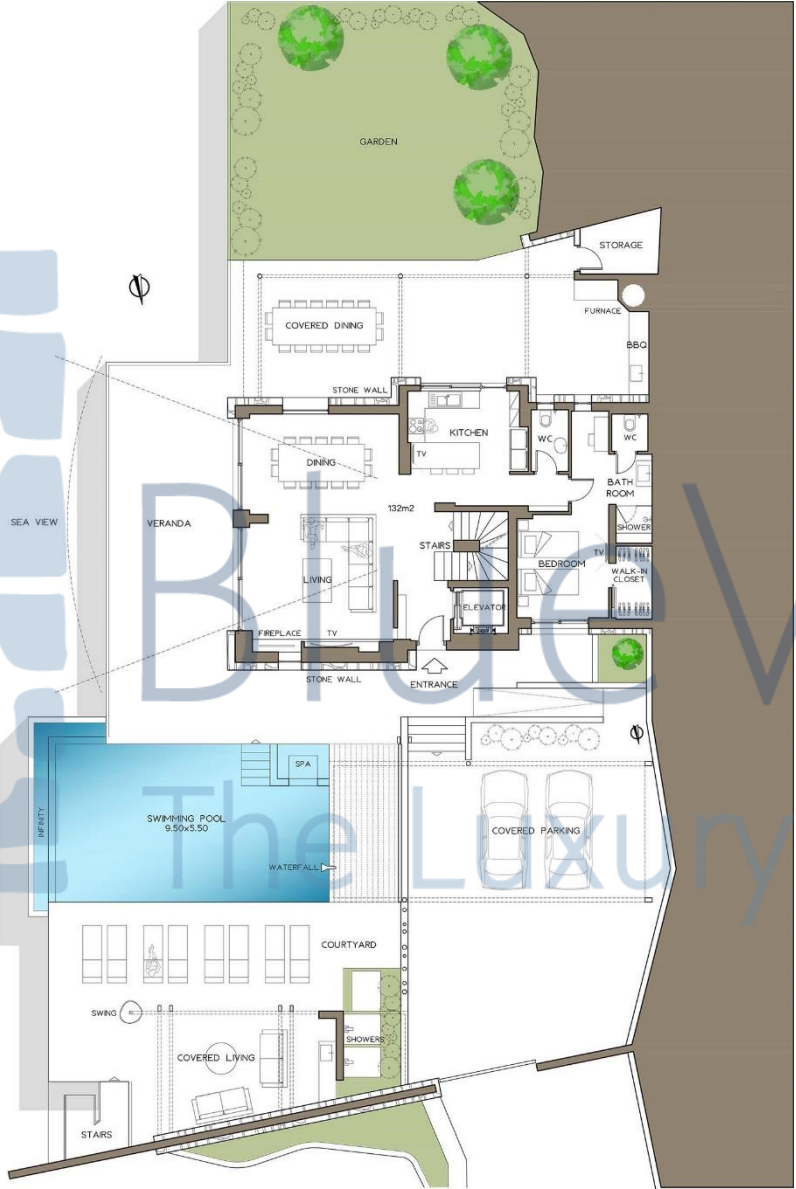




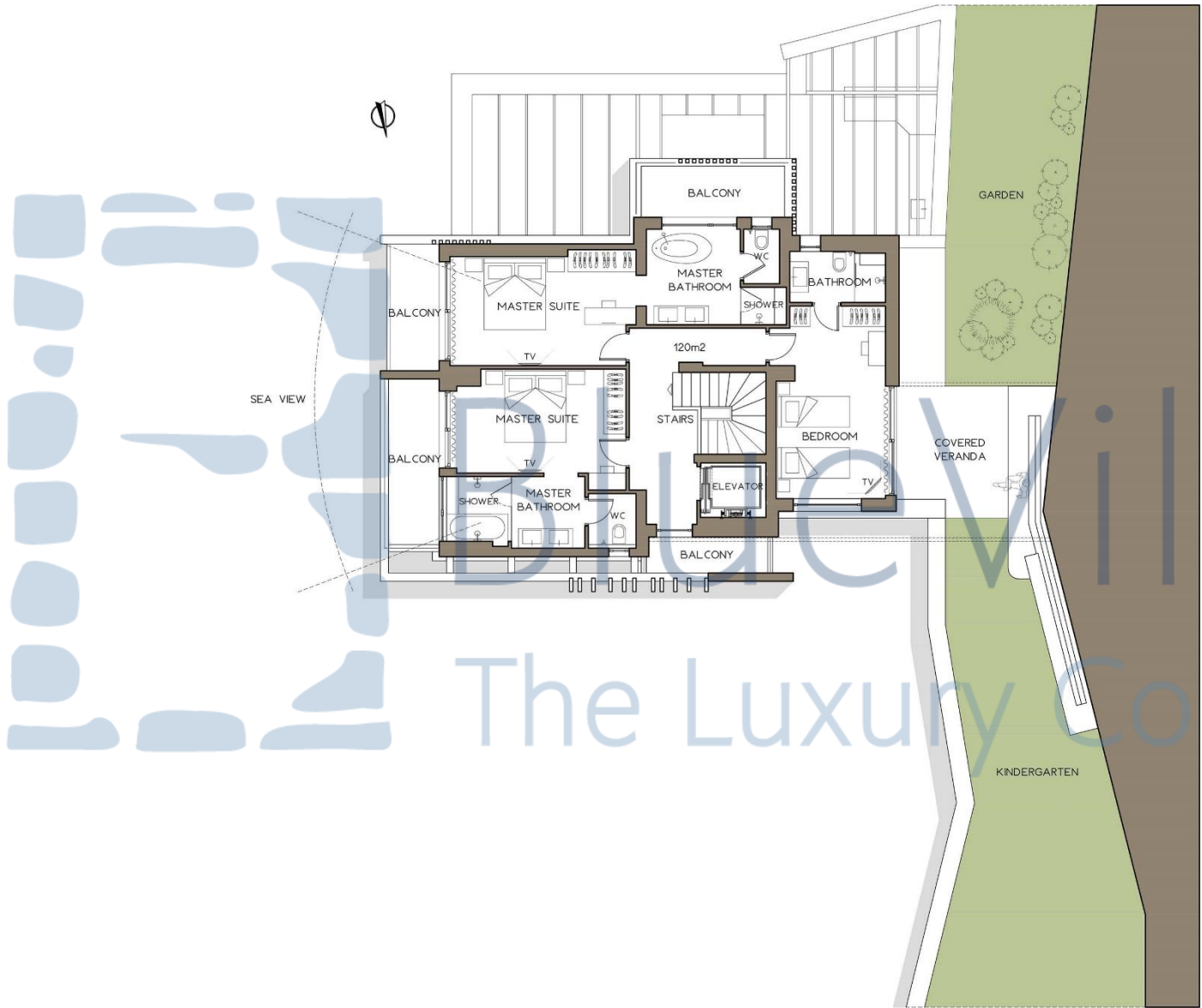
LOWER LEVEL



GROUND LEVEL



UPPER LEVEL



info@bluevillascollection.com

Tel: 0030 210 4836823

